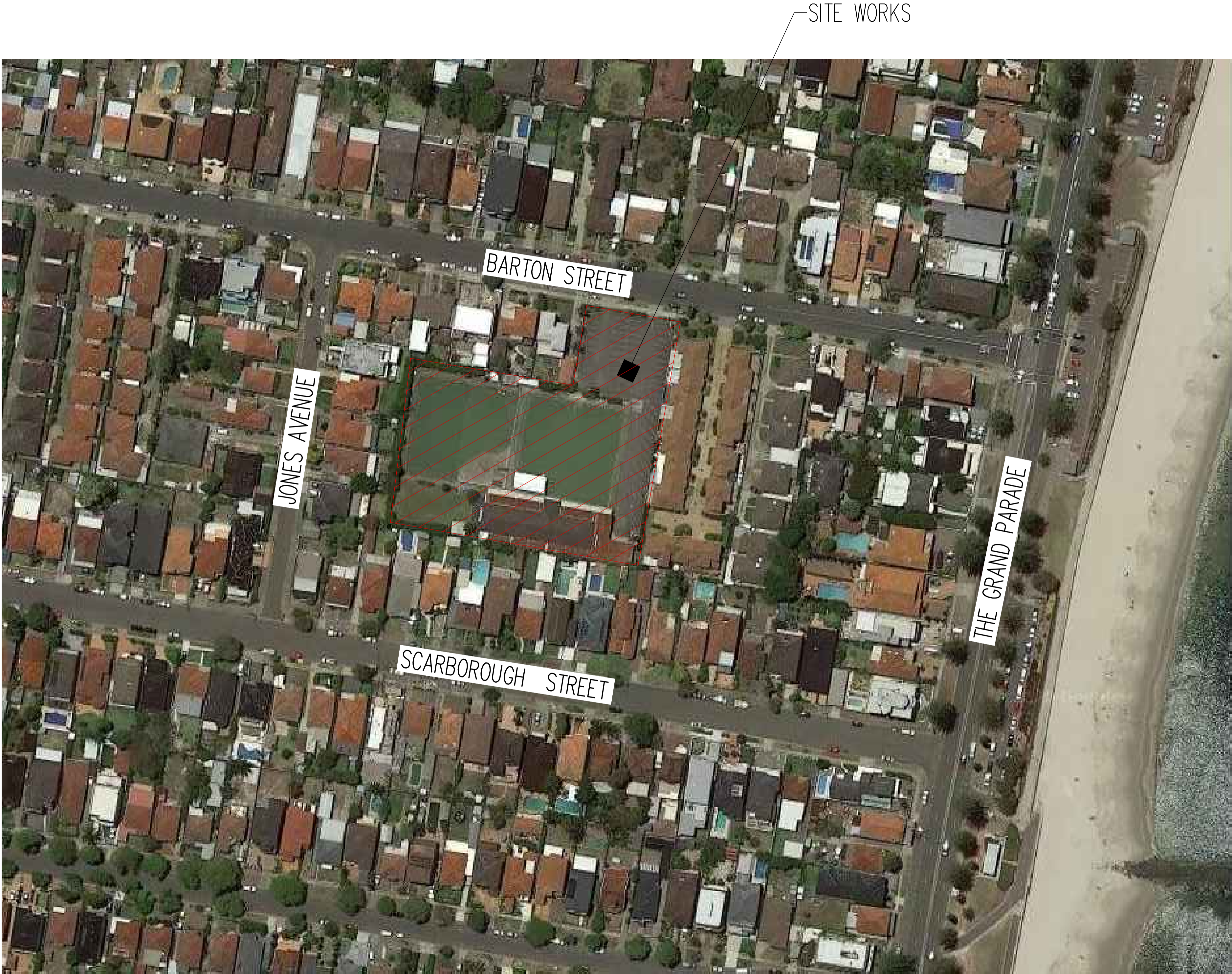


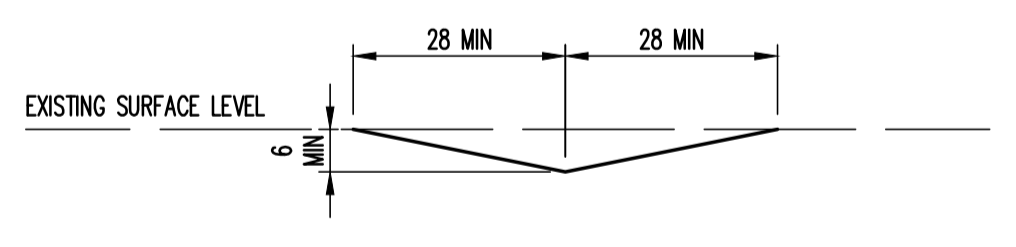
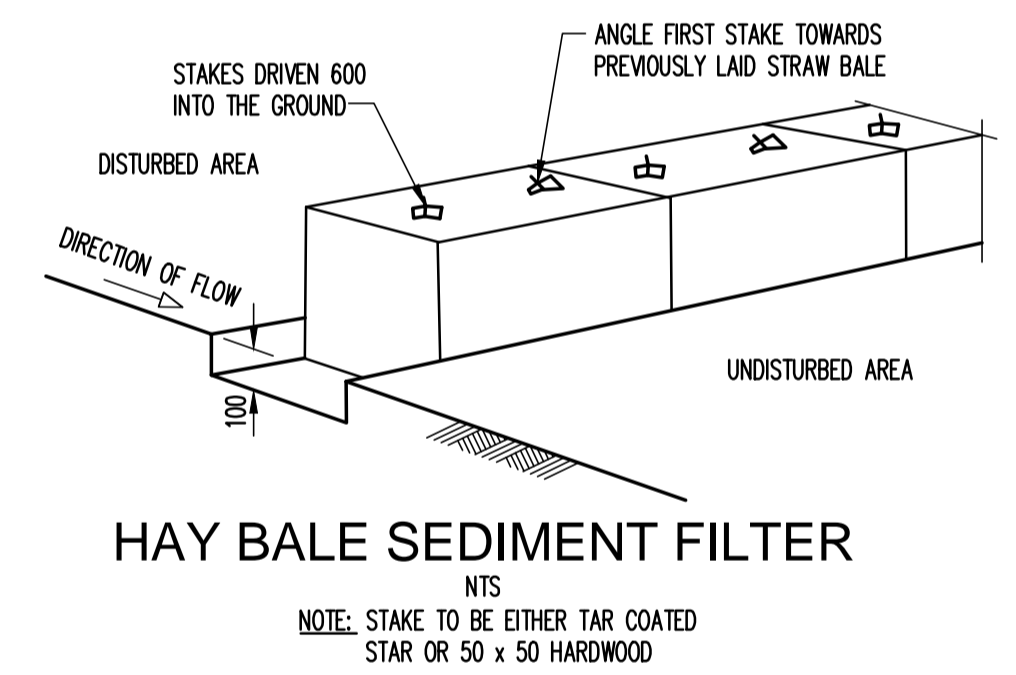
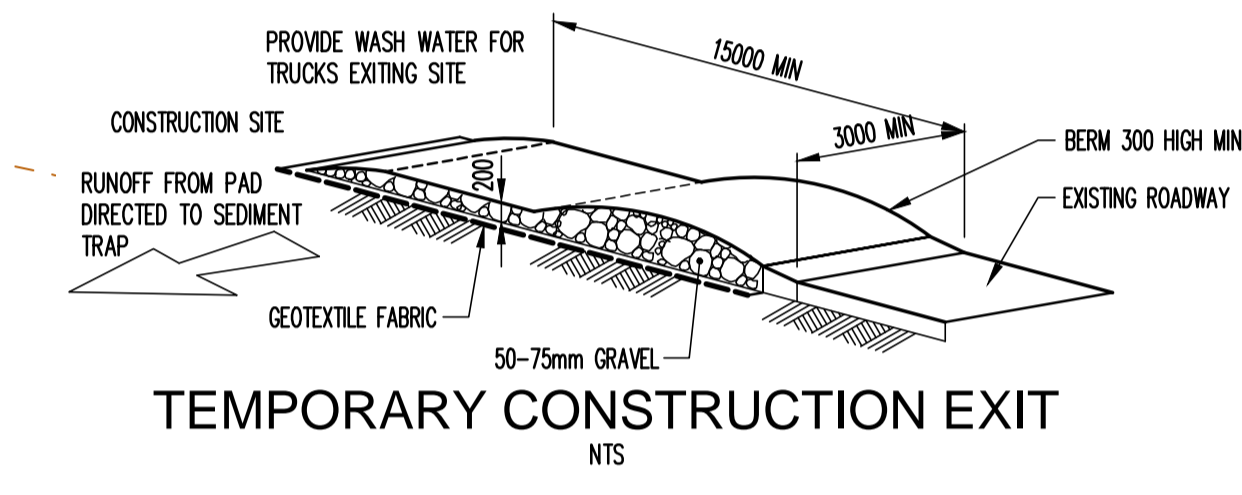
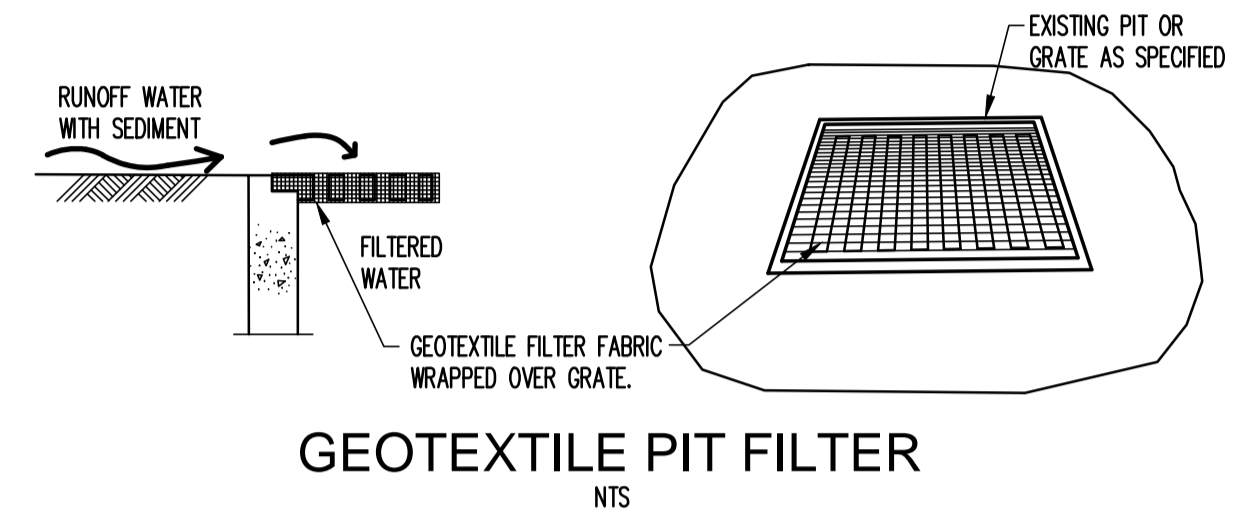
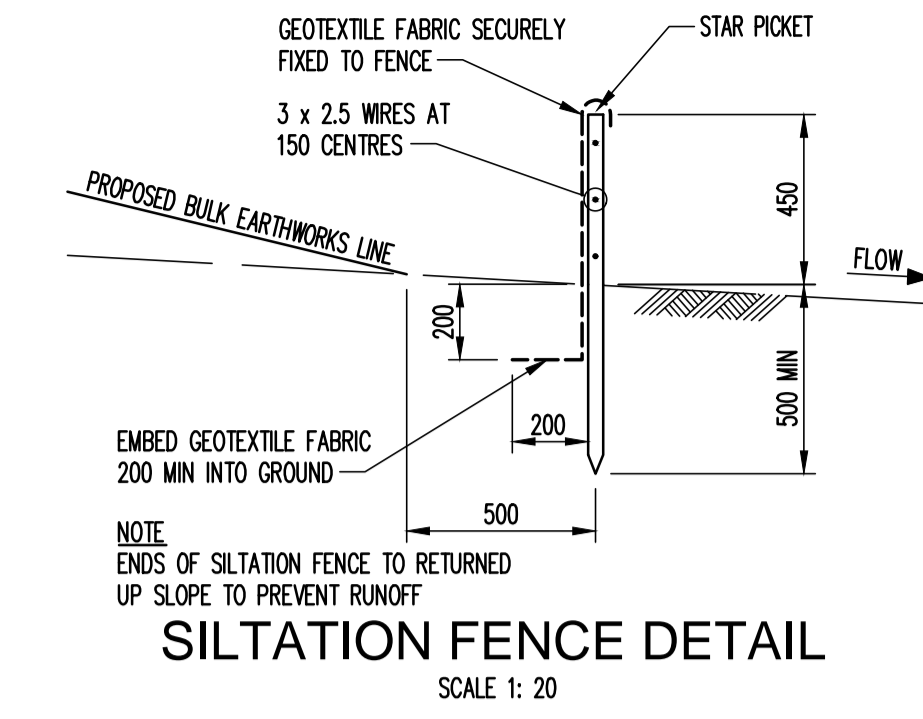
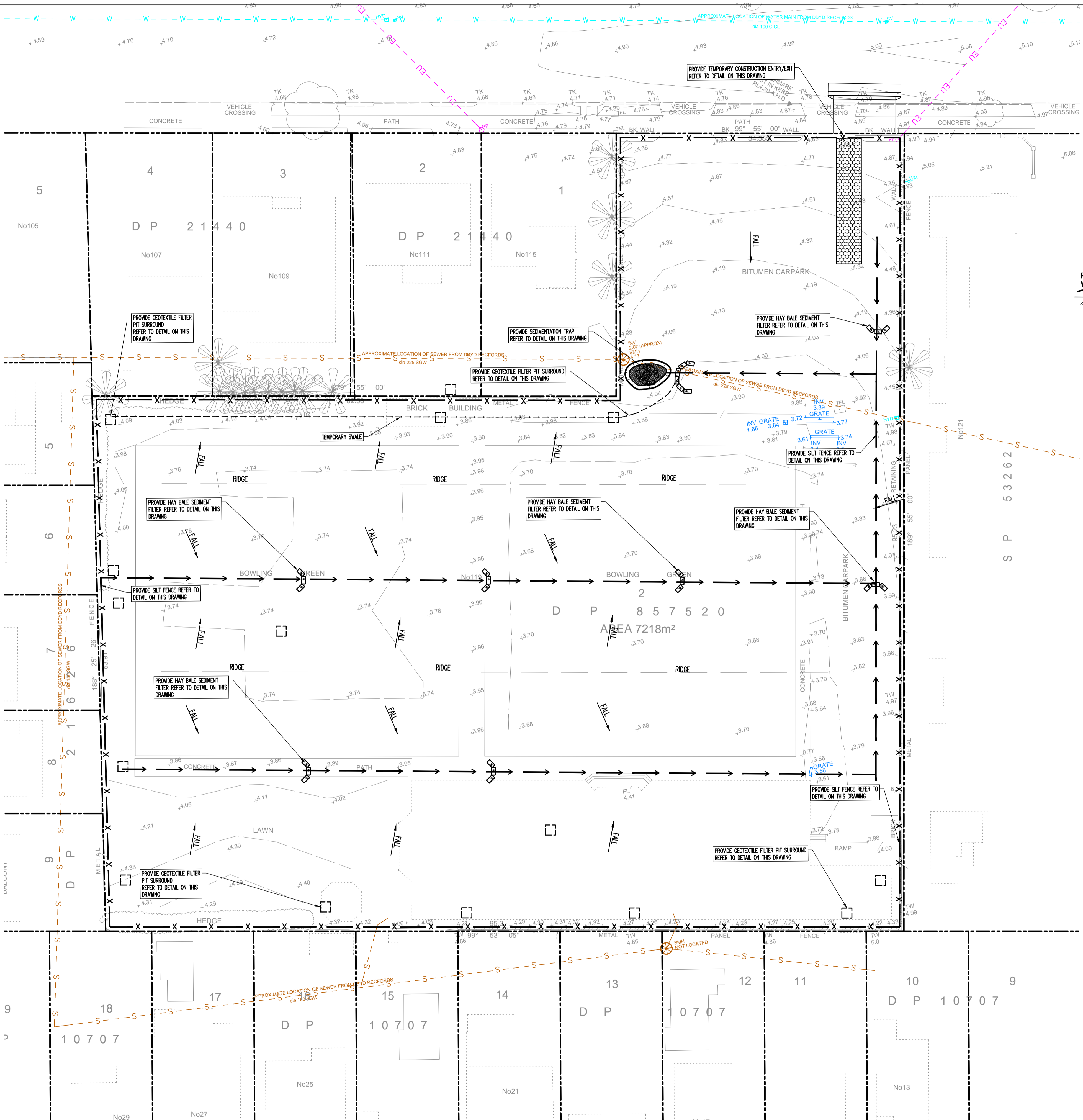
# SUMMITCARE MONTEREY CIVIL ENGINEERING DRAWINGS

## TABLE OF CONTENTS

Dwg No	Dwg Title
C001	TITLE SHEET, DRAWING INDEX AND LOCALITY PLAN
C002	GENERAL NOTES, LEGENDS AND TYPICAL DETAILS
C100	EROSION AND SEDIMENT CONTROL PLAN
C200	SITWORKS AND STORMWATER MANAGEMENT GROUND FLOOR
C400	DETAILS SHEET
C500	BULK EARTHWORKS CUT/FILL PLAN







**EROSION AND SEDIMENT CONTROL NOTES**

- All work shall be generally carried out in accordance with (A) Local authority requirements, (B) EPA - Pollution control manual for urban stormwater, (C) LANDCOM NSW - Managing Urban Stormwater: Soils and Construction ("Blue Book").
- Erosion and sediment control drawings and notes are provided for the whole of the works. Should the Contractor stage these works then the design may be required to be modified. Variation to these details may require approval by the relevant authorities. The erosion and sediment control plan shall be implemented and adapted to meet the varying situations as work on site progresses.
- Maintain all erosion and sediment control devices to the satisfaction of the superintendent and the local authority.
- When stormwater pits are constructed prevent silt runoff entering the pits unless silt fences are erected around pits.
- Minimise the area of site being disturbed at any one time.
- Protect all stockpiles of materials from scour and erosion. Do not stockpile loose material in roadways, near drainage pits or in watercourses.
- All soil and water control measures are to be put back in place at the end of each working day, and modified to best suit site conditions.
- Control water from upstream of the site such that it does not enter the disturbed site.
- All construction vehicles shall enter and exit the site via the temporary construction entry/exit.
- All vehicles leaving the site shall be cleaned and inspected before leaving.
- Maintain all stormwater pipes and pits clear of debris and sediment. Inspect stormwater system and clean out after each storm event.
- Clean out all erosion and sediment control devices after each storm event.

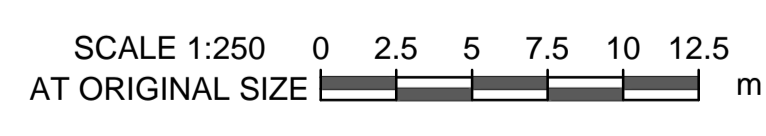
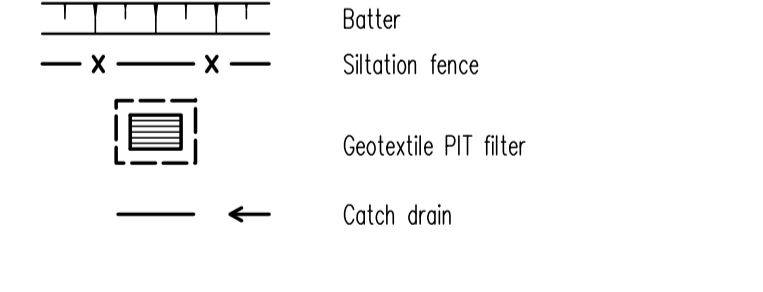
- Sequence of Works**
- Prior to commencement of excavation the following soil management devices must be installed.
  - Construct silt fences below the site and across all potential runoff sites.
  - Construct temporary construction entry/exit and divert runoff to suitable control systems.
  - Construct measures to divert upstream flows into existing stormwater system.
  - Construct sedimentation traps/basin including outlet control and overflow.
  - Construct turf lined swales.
  - Provide sandbag sediment traps upstream of existing pits.
  - Construct geotextile filter pit surround around all proposed pits as they are constructed.
  - On completion of pavement provide sand bag kerb inlet sediment traps around pits.
  - Provide and maintain a strip of turf on both sides of all roads after the construction of kerbs.

**WATER QUALITY TESTING REQUIREMENTS**

Prior to discharge of site stormwater, groundwater and seepage water into council's stormwater system, contractors must undertake water quality tests in conjunction with a suitably qualified environmental consultant outlining the following:

- Compliance with the criteria of the Australian and New Zealand Guidelines for Fresh and Marine Water Quality (2000)
- If required subject to the environmental consultants advice, provide remedial measures to improve the quality of water that is to be discharged into Councils storm water drainage system. This should include comments from a suitably qualified environmental consultant confirming the suitability of these remedial measures to manage the water discharged from the site into Councils storm water drainage system. Outlining the proposed, ongoing monitoring, contingency plans and validation program that will be in place to continually monitor the quality of water discharged from this site. This should outline the frequency of water quality testing that will be undertaken by a suitably qualified environmental consultant.

**EROSION AND SEDIMENT CONTROL LEGEND**



Rev	Description	Eng	Draft	Date
P2	ISSUE FOR APPROVAL	NB	AI	04.12.20
P1	ISSUE FOR INFORMATION	NB	AI	27.10.20

BWARE OF UNDERGROUND SERVICES. THE LOCATION OF UNDERGROUND SERVICES ARE APPROXIMATE ONLY AND THEIR EXACT POSITION SHOULD BE PROVEN ON SITE. NO GUARANTEE IS GIVEN THAT ALL EXISTING SERVICES ARE SHOWN

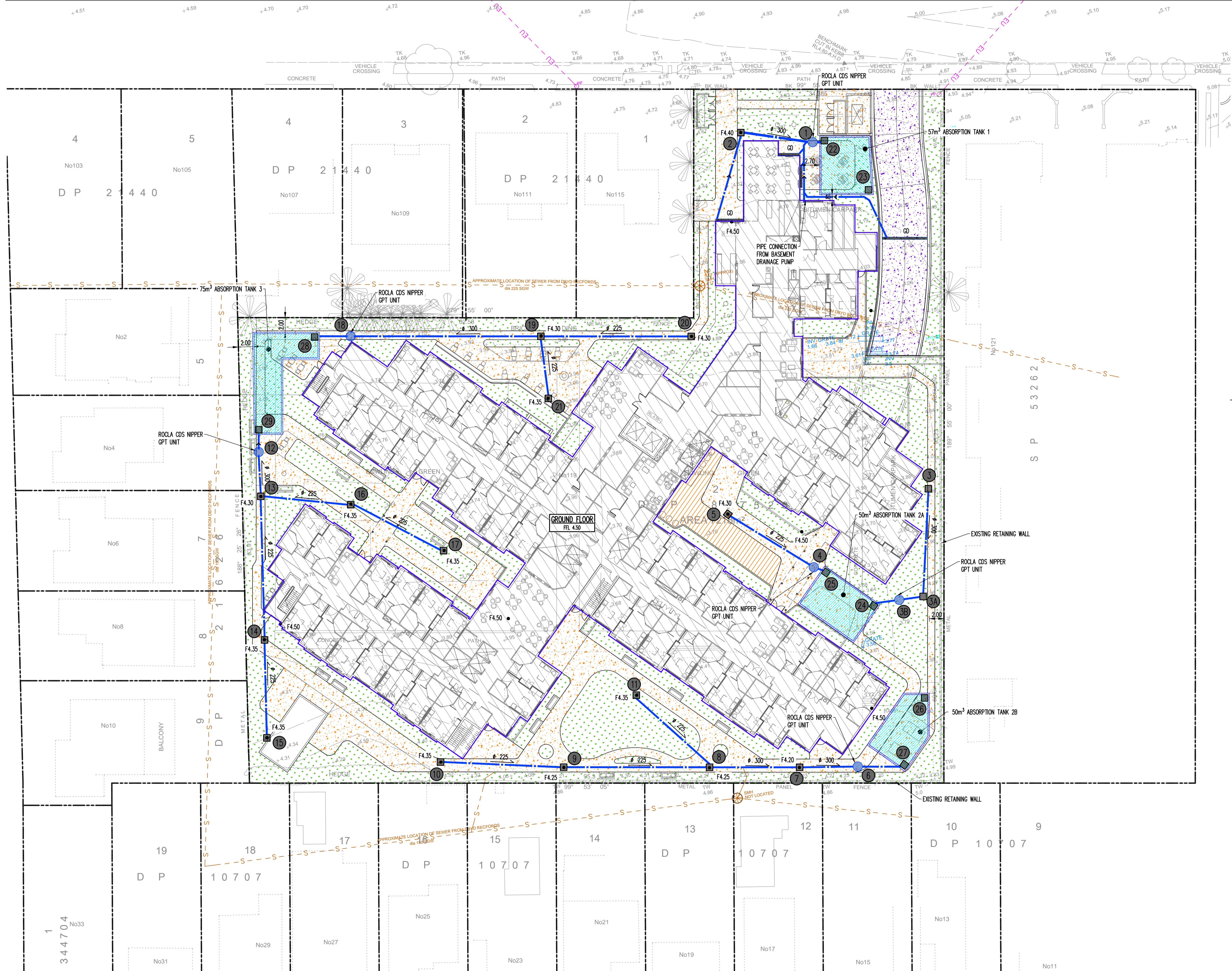
Architect  
**BOFFA ROBERTSON GROUP**  
 SUITE 7, LEVEL 1 EPICA,  
 9 RAILWAY STREET,  
 CHATSWOOD 2067

**TTW** Structural  
 Civil  
 Traffic  
 Façade  
 612 9439 7288 | 48 Chandos Street St Leonards NSW 2065  
 This drawing is copyright and is the property of TAYLOR THOMSON WHITTING (VIC) Pty Ltd and must not be used without authorisation.

Project  
**SUMMITCARE MONTEREY**  
 119 BARTON STREET  
 MONTEREY 2217

Sheet Subject  
**EROSION AND SEDIMENT CONTROL PLAN**

Scale: A1  
 1:250  
 Job No: 201718  
 Drawing No: C100  
 Revision: P2  
 Plot File Created: Dec 04, 2020 - 11:07am



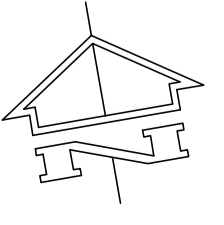
**SITWORKS LEGEND**

- F22.00 Finished surface level
- F22.00 Finished contour
- K&G Kerb and gutter
- KO Kerb only
- Stormwater pit, flow direction and line with Invert level upstream, Pipe size and class, Pipe grade, Flow (Litres per second), Invert level downstream
- GD Grated drain
- Subsoil drainage line (100 dia) - refer detail sheets
- IR Intermediate riser with subsoil drainage line (100 dia)
- FP Flushing point with subsoil drainage line (100 dia)
- DP Down pipe
- Concrete encased stormwater line
- RWO 300 x 300 Rainwater Outlet
- RW Retaining wall
- Overland flow path
- Landscaping with sandy loamy soils

SCALE 1:250 0 2.5 5 7.5 10 12.5  
AT ORIGINAL SIZE

Rev	Description	Eng	Draft	Date	Rev	Description	Eng	Draft	Date
P4	ISSUE FOR COORDINATION	NB	AI	23.08.21					
P3	ISSUE FOR COORDINATION	NB	AI	20.08.21					
P2	ISSUE FOR APPROVAL	NB	AI	04.12.20					
P1	ISSUE FOR INFORMATION	NB	AI	27.10.20					

BEWARE OF UNDERGROUND SERVICES. THE LOCATION OF UNDERGROUND SERVICES ARE APPROXIMATE ONLY AND THEIR EXACT POSITION SHOULD BE PROVEN ON SITE. NO GUARANTEE IS GIVEN THAT ALL EXISTING SERVICES ARE SHOWN



Architect  
**BOFFA ROBERTSON GROUP**  
SUITE 7, LEVEL 1 EPICA,  
9 RAILWAY STREET,  
CHATSWOOD 2067

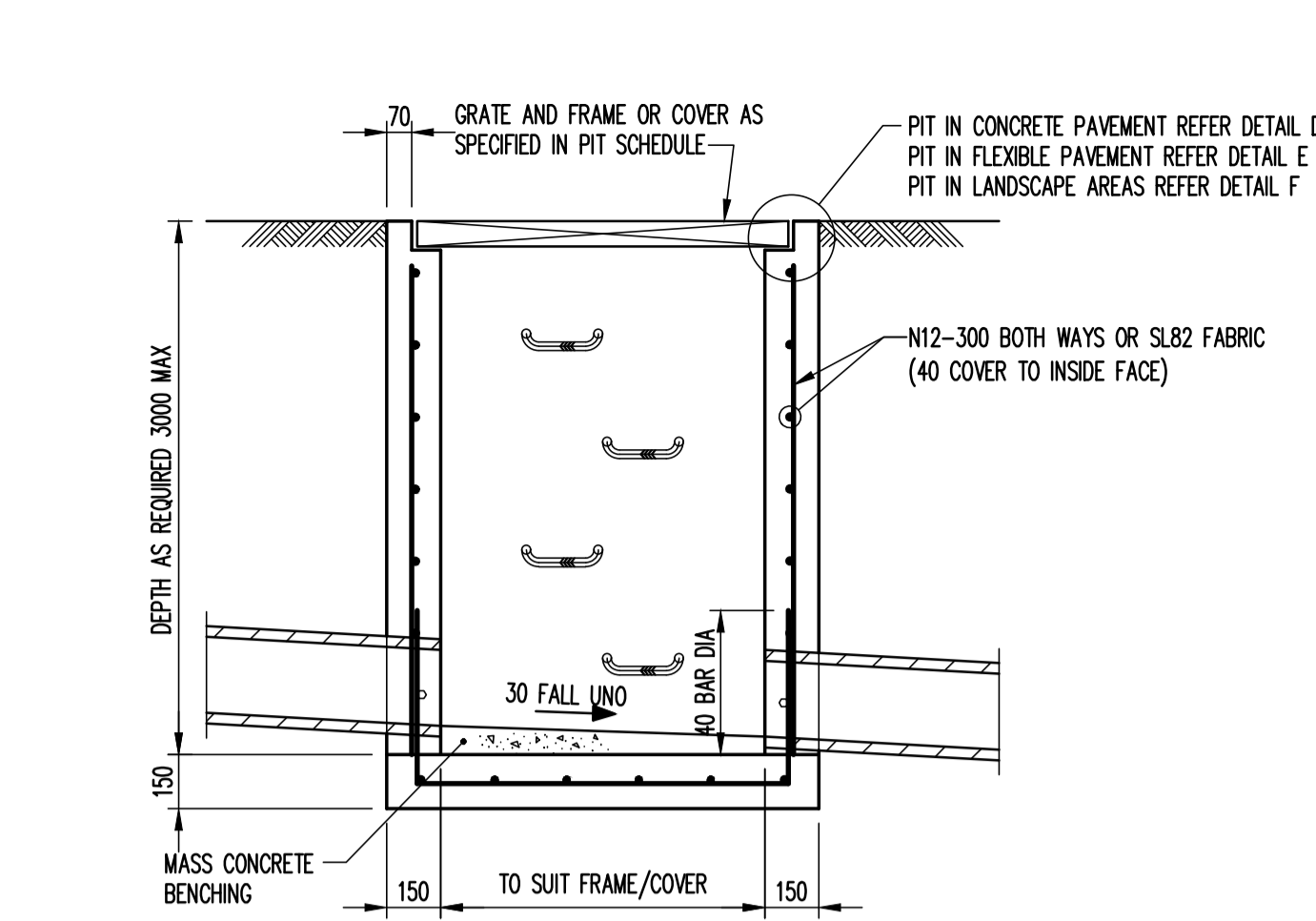


612 9439 7288 | 48 Chandos Street St Leonards NSW 2065  
This drawing is copyright and is the property of TAYLOR THOMSON WHITTING (VIC) Pty Ltd and must not be used without authorisation.

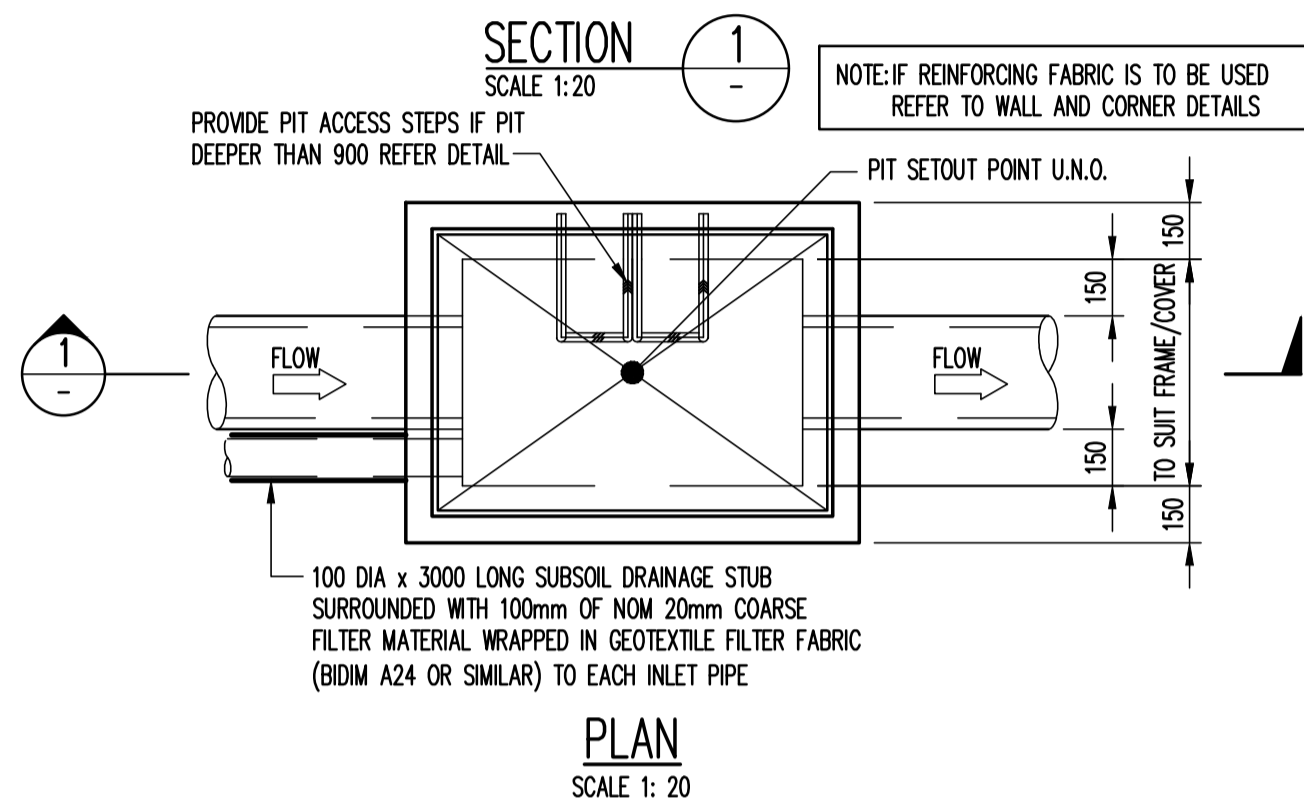
Project  
**SUMMITCARE MONTEREY**  
119 BARTON STREET  
MONTEREY 2217

Sheet Subject  
**CIVIL SITE PLAN**

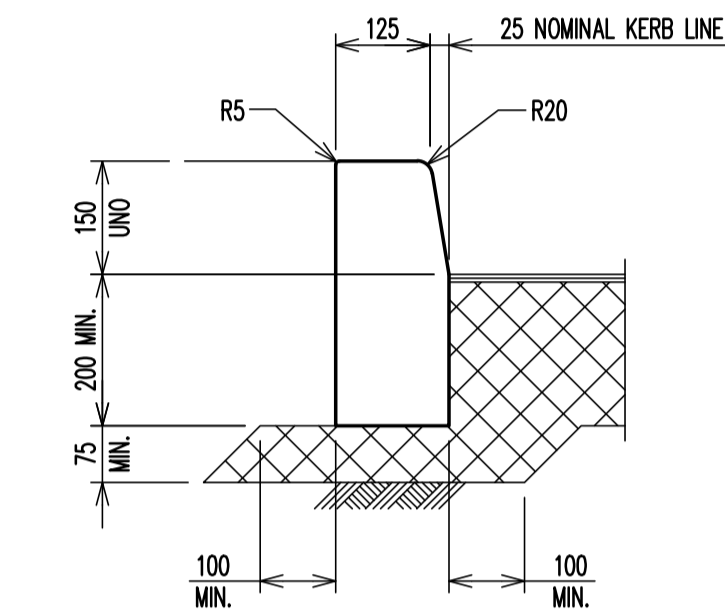
Scale: A1 <b>1:250</b>	Drawn: AE
Job No <b>201718</b>	Drawing No <b>C200</b>
Revision <b>P4</b>	
Plot File Created: Aug 23, 2021 - 2:13pm	



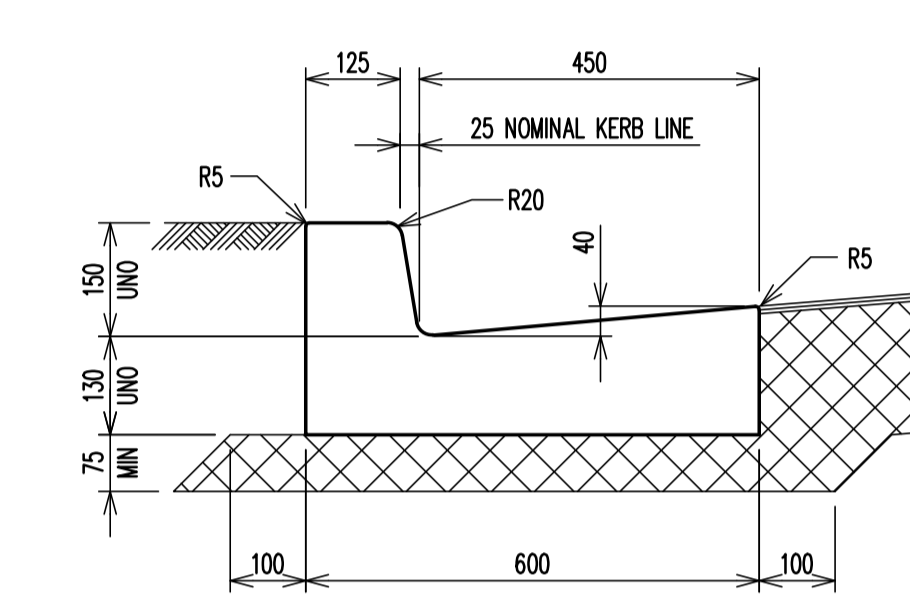
**PIT ACCESS STEP DETAIL**  
SCALE 1: 10



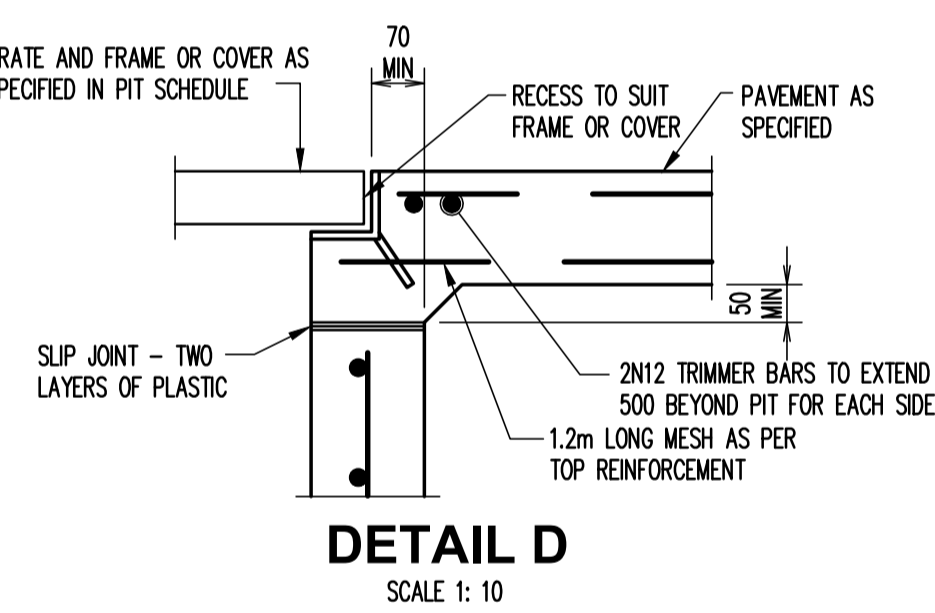
**PIT TYPE A**  
SCALE 1: 20



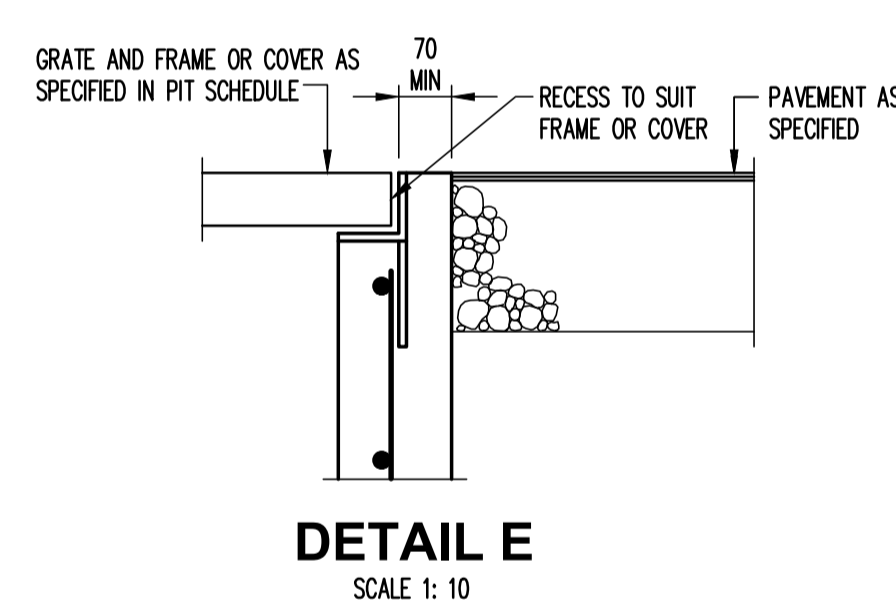
**KERB ONLY (KO)**  
SCALE 1: 10



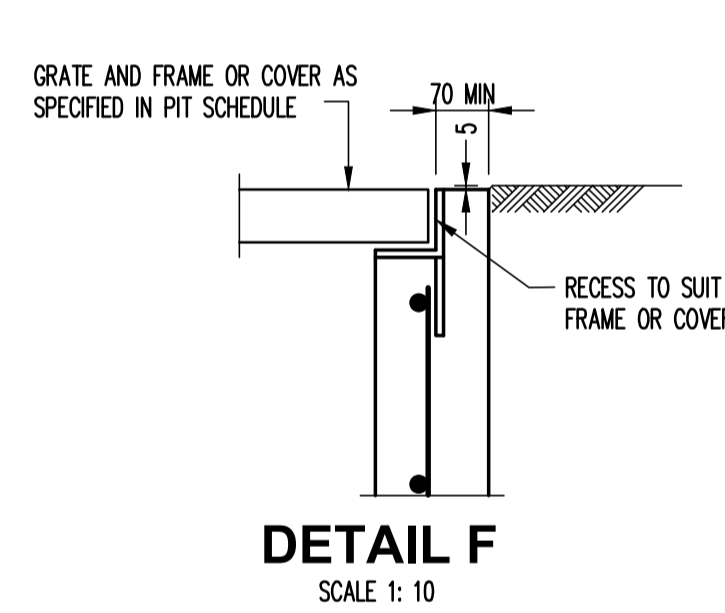
**KERB AND GUTTER (K&G)**  
SCALE 1: 10



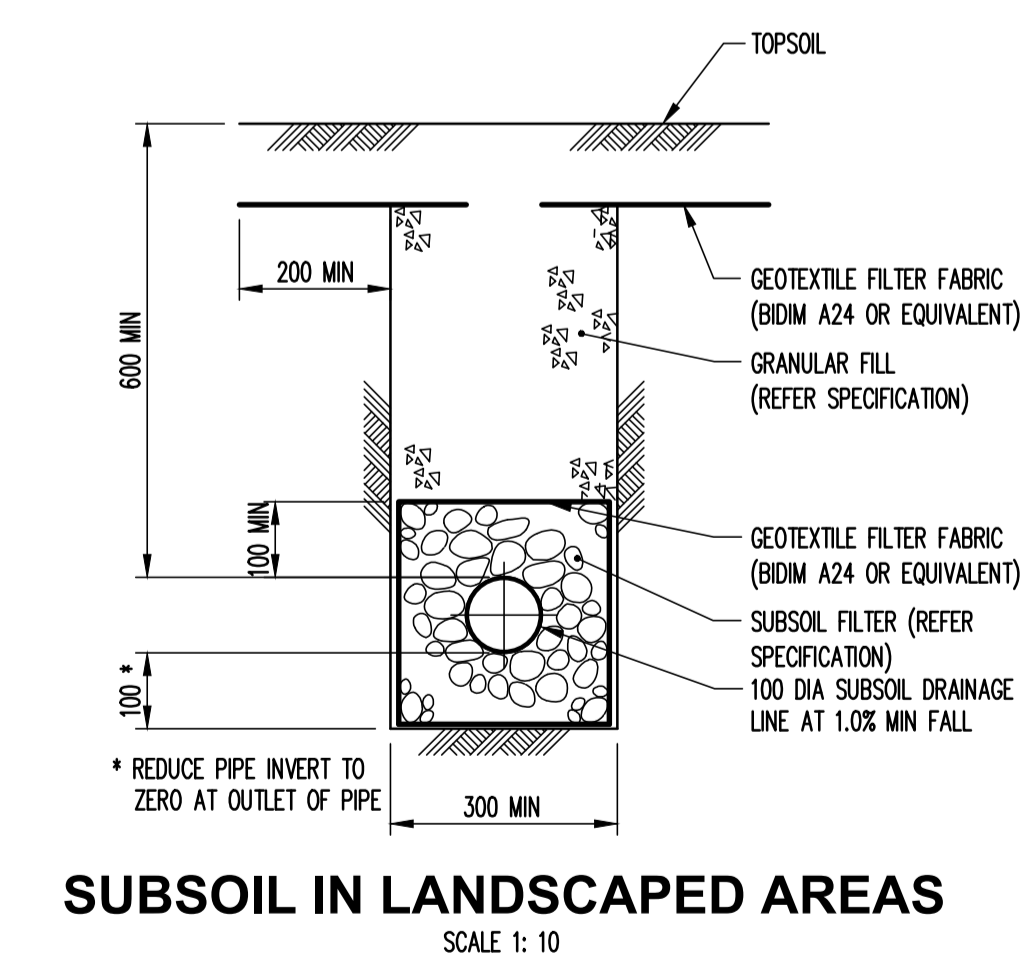
**DETAIL D**  
SCALE 1: 10



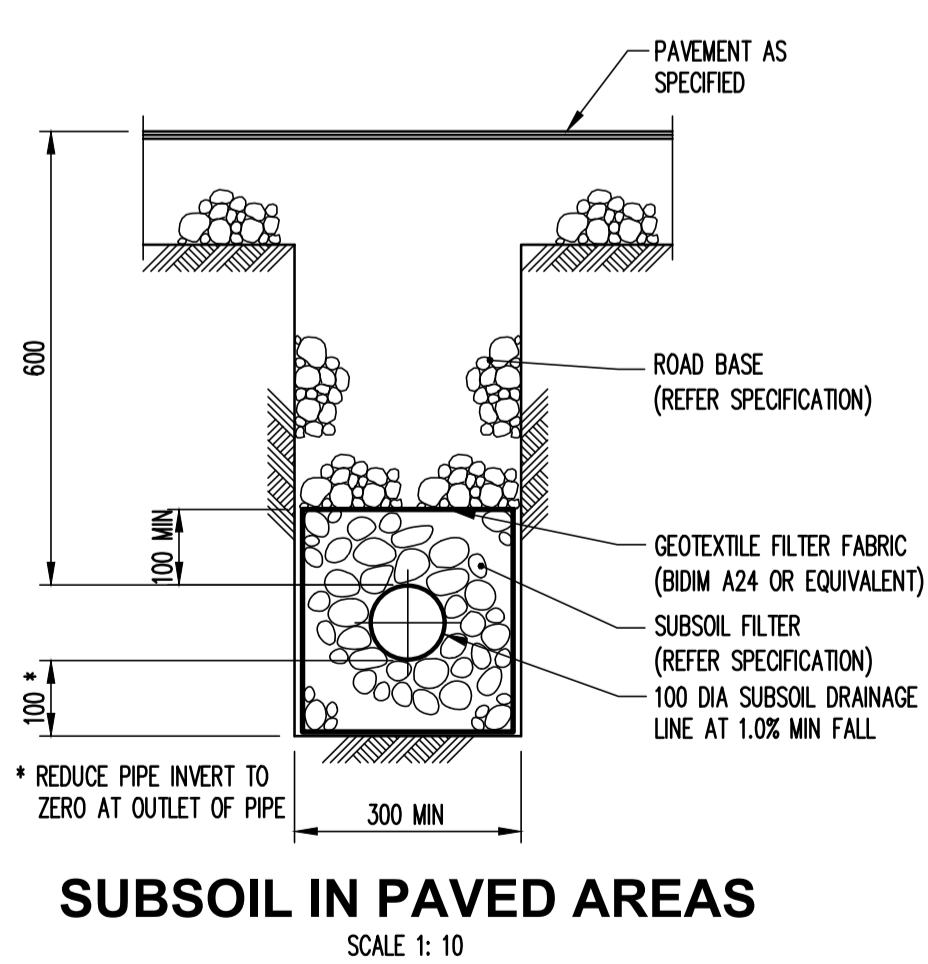
**DETAIL E**  
SCALE 1: 10



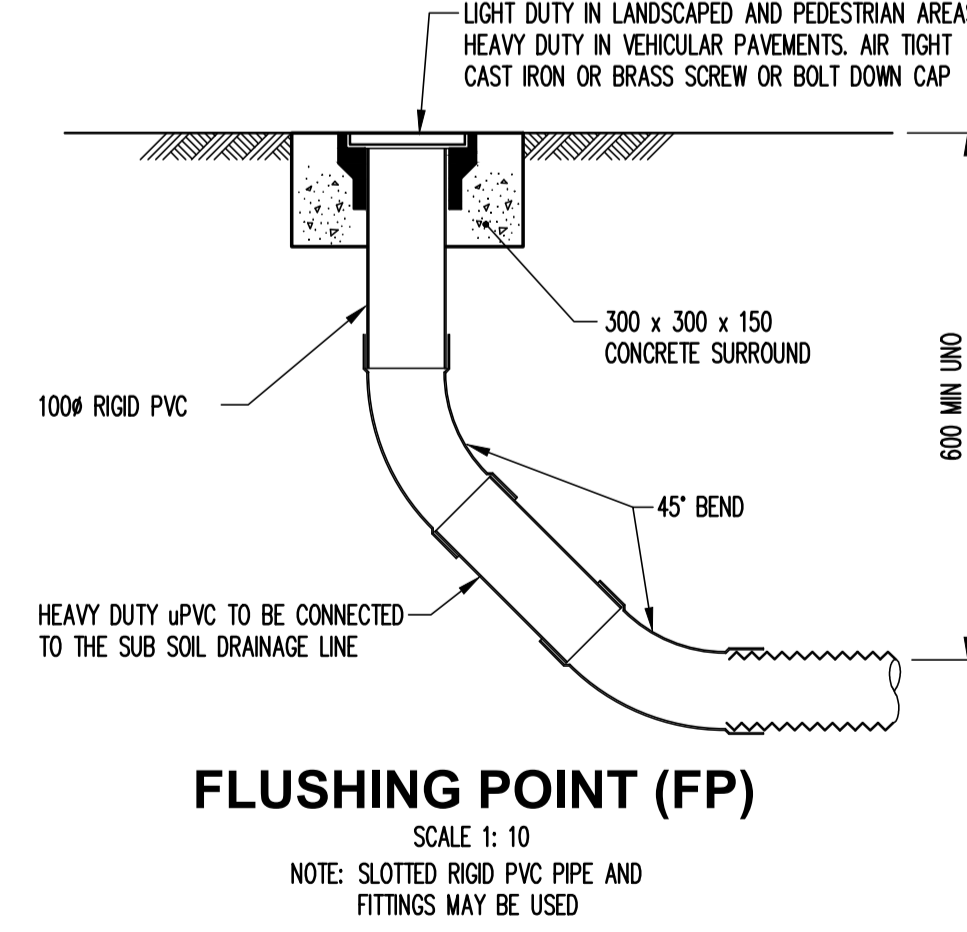
**DETAIL F**  
SCALE 1: 10



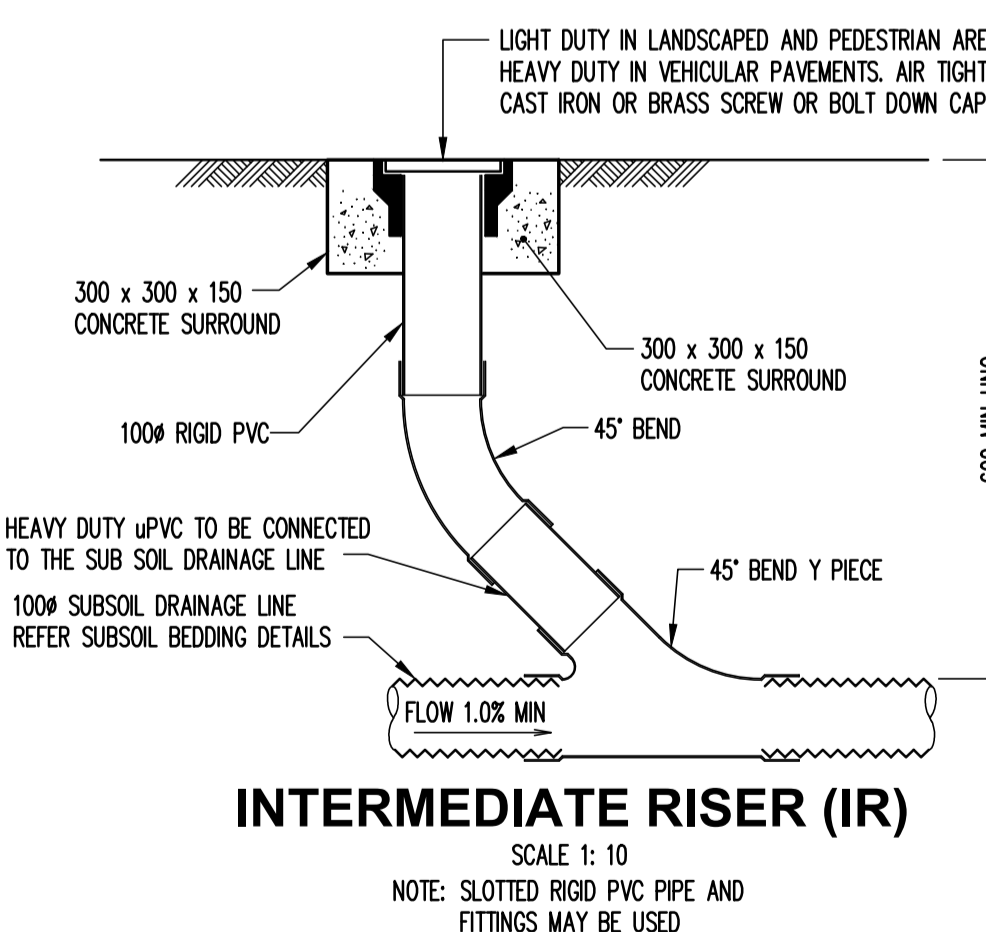
**SUBSOIL IN LANDSCAPED AREAS**  
SCALE 1: 10



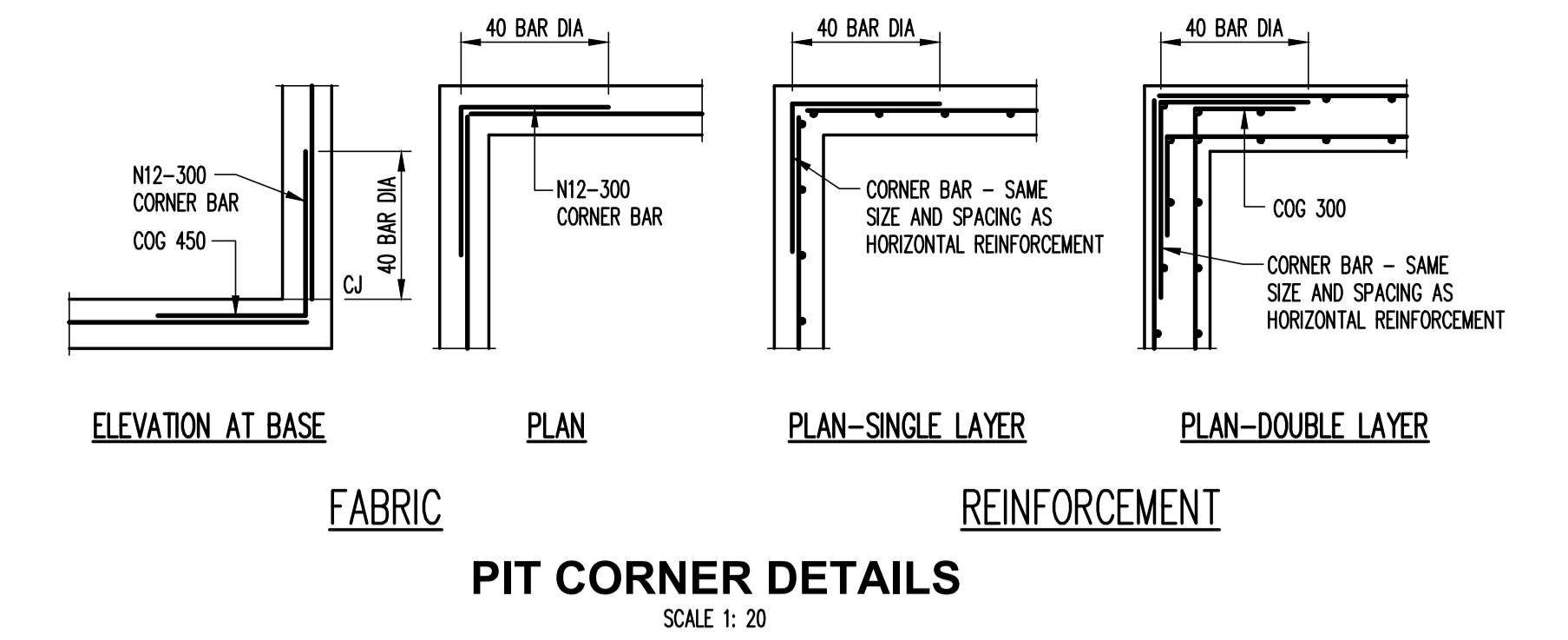
**SUBSOIL IN PAVED AREAS**  
SCALE 1: 10



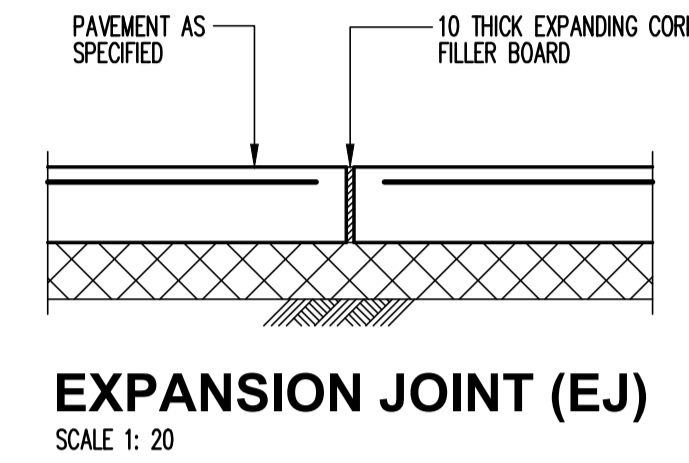
**FLUSHING POINT (FP)**  
SCALE 1: 10  
NOTE: SLOTTED RIGID PVC PIPE AND FITTINGS MAY BE USED



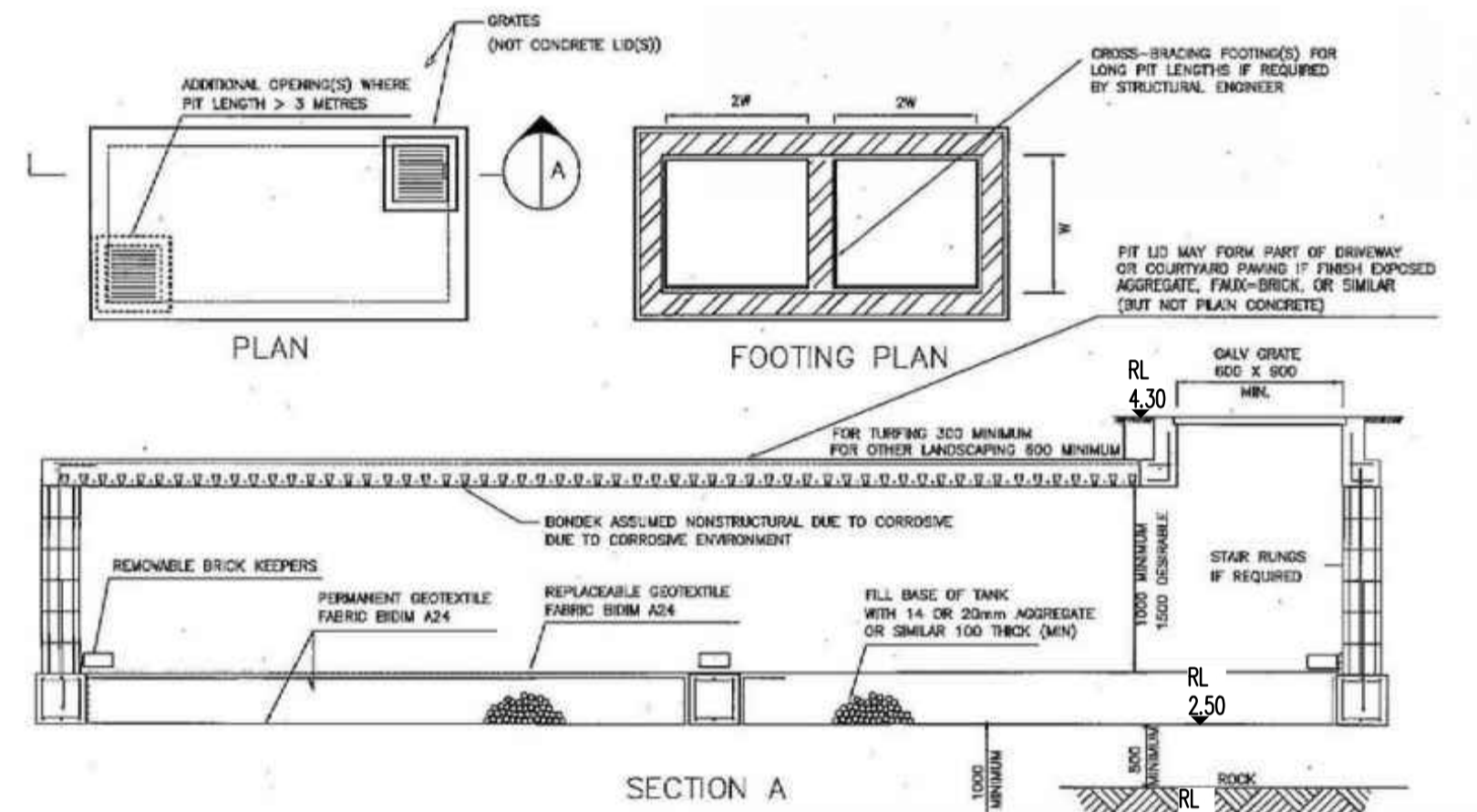
**INTERMEDIATE RISER (IR)**  
SCALE 1: 10  
NOTE: SLOTTED RIGID PVC PIPE AND FITTINGS MAY BE USED



**PIT CORNER DETAILS**  
SCALE 1: 20

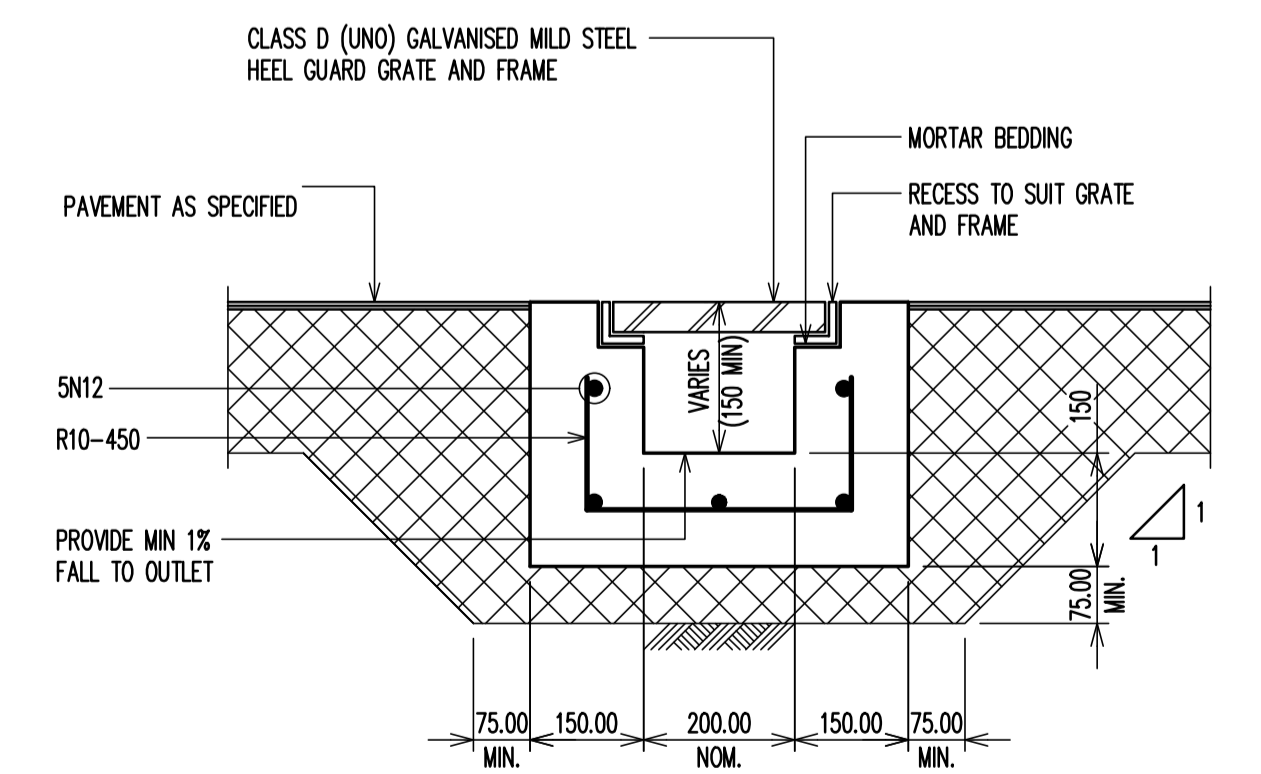


**EXPANSION JOINT (EJ)**  
SCALE 1: 20



**COVERED TANK TYPE ABSORPTION PIT**  
DRAWING C 4

**TYPICAL ABSORPTION TANK DETAIL**



**GRADED DRAIN TYPE A (GDA)**  
SCALE 1: 10

Rev	Description	Eng	Draft	Date	Rev	Description	Eng	Draft	Date
P3	ISSUE FOR APPROVAL	NB	AI	23.08.21					
P2	ISSUE FOR APPROVAL	NB	AI	04.12.20					
P1	ISSUE FOR INFORMATION	NB	AI	27.10.20					

BEWARE OF UNDERGROUND SERVICES.  
THE LOCATION OF UNDERGROUND SERVICES ARE APPROXIMATE ONLY AND THEIR EXACT POSITION SHOULD BE PROVEN ON SITE. NO GUARANTEE IS GIVEN THAT ALL EXISTING SERVICES ARE SHOWN

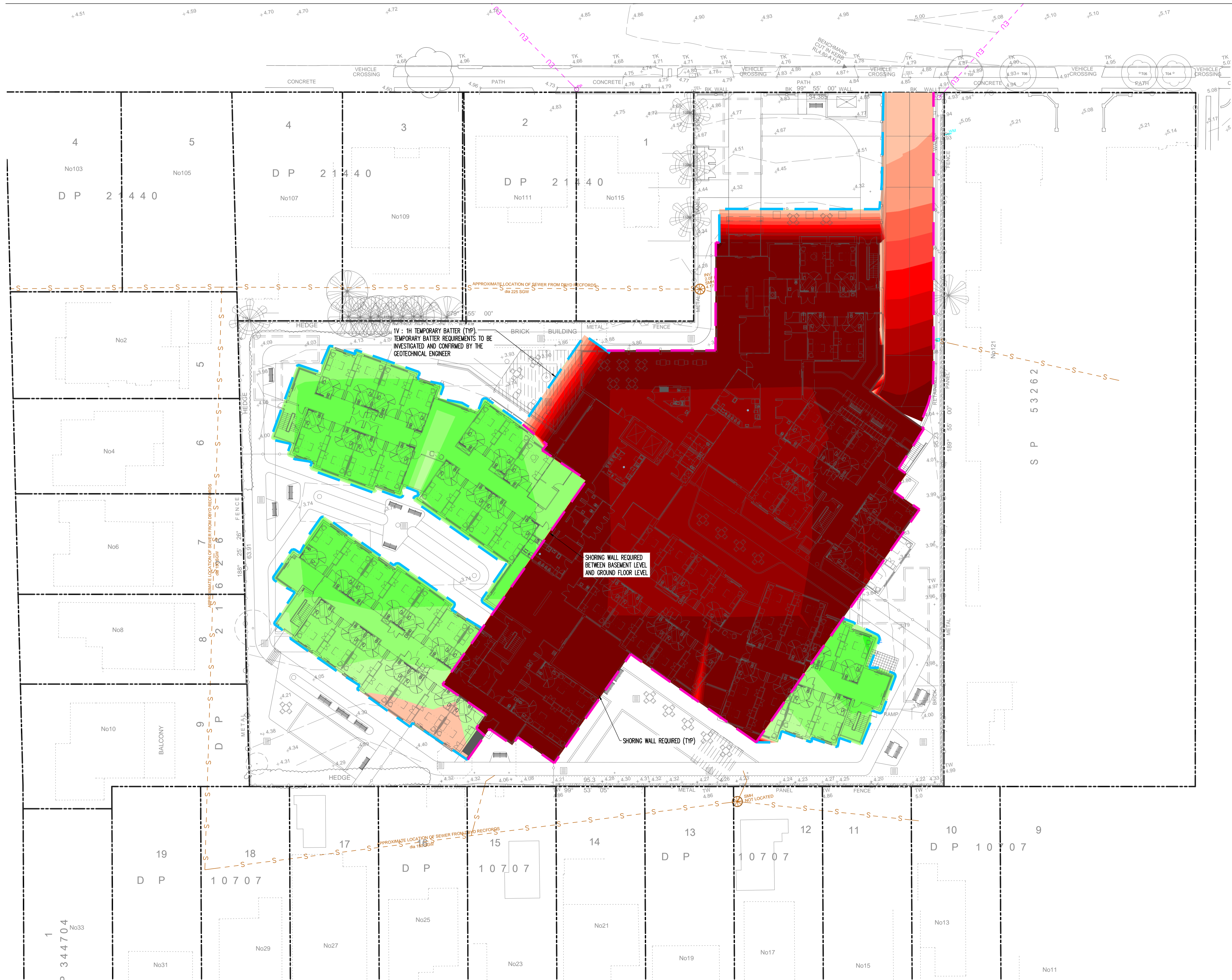
Architect  
**BOFFA ROBERTSON GROUP**  
SUITE 7, LEVEL 1 EPICA,  
9 RAILWAY STREET,  
CHATSWOOD 2067

**TTW** Structural Civil Traffic Façade  
612 9439 7288 | 48 Chandos Street St Leonards NSW 2065  
This drawing is copyright and is the property of TAYLOR THOMSON WHITTING (VIC) Pty Ltd and must not be used without authorisation.

Project  
**SUMMITCARE MONTEREY**  
119 BARTON STREET  
MONTEREY 2217

Sheet Subject  
**DETAILS PAGE**

Scale : A1 Drawn: AE  
**AS SHOWN**  
Job No 201718 Drawing No C400 Revision P3  
Plot File Created: Aug 23, 2021 - 2:12pm



Lower_value	Upper_value	Colour
-99999	to -5	m
-5	to -4.5	m
-4.5	to -4	m
-4	to -3.5	m
-3.5	to -3	m
-3	to -2.5	m
-2.5	to -2	m
-2	to -1.5	m
-1.5	to -1	m
-1	to -.5	m
-.5	to 0.00	m
0.000	to 0.2	m
0.2	to .4	m
.4	to .6	m
.6	to .8	m
.8	to 1	m
1	to 1.2	m
1.2	to 1.4	m
1.4	to 1.6	m
1.6	to 1.8	m
1.8	to 2	m
2	to 9999	m

CUT = 11,900 m<sup>3</sup>  
 FILL = 500 m<sup>3</sup>  
 BALANCE = 11,400 m<sup>3</sup>

BASEMENT 1 BULK EARTHWORKS LEVEL = RL -0.30  
 GROUND FLOOR BULK EARTHWORKS LEVEL = RL 4.20

NOTE: BULK EARTHWORKS VOLUMES SHOWN IS FOR BUILDING WORKS ONLY

Rev	Description	Eng	Draft	Date
P2	ISSUE FOR APPROVAL	NB	AI	04.12.20
P1	ISSUE FOR INFORMATION	NB	AI	10.11.20

BWARE OF UNDERGROUND SERVICES. THE LOCATION OF UNDERGROUND SERVICES ARE APPROXIMATE ONLY AND THEIR EXACT POSITION SHOULD BE PROVEN ON SITE. NO GUARANTEE IS GIVEN THAT ALL EXISTING SERVICES ARE SHOWN

Architect  
**BOFFA ROBERTSON GROUP**  
 SUITE 7, LEVEL 1 EPICA,  
 9 RAILWAY STREET,  
 CHATSWOOD 2067

**TTW** Structural  
 Civil  
 Traffic  
 Façade  
 612 9439 7288 | 48 Chandos Street St Leonards NSW 2065  
 This drawing is copyright and is the property of TAYLOR THOMSON WHITTING (VIC) Pty Ltd and must not be used without authorisation.

Project  
**SUMMITCARE MONTEREY**  
 119 BARTON STREET  
 MONTEREY 2217

Sheet Subject  
**BULK EARTHWORKS CUT/FILL PLAN**  
 Scale: A1  
 1:250  
 Job No: 201718  
 Drawing No: C500  
 Revision: P2  
 Plot File Created: Dec 04, 2020 - 11:08am

